



ABP-1C

Built-in Hand/Foot Washing System

Specifications

Materials

All exposed materials are stainless steel or chrome-plated brass. Valve bodies are cast brass.

Standard Equipment

In-Wall Valves as Selected

For more information on each valve type, please enter the model number in the search box at www.bradleycorp.com.

Wash Spouts

Stainless steel Ablution spout or chrome-plated severe service head options with anti-splash 0.5 gpm (1.9 Lpm), 1.0 gpm (3.8 Lpm), or 1.5 gpm (5.68 Lpm) flow.

Supply Inlets

Female supply inlets are 1/2" NPT for SV option. All other connections 3/8" O.D. or 5/8" O.D.

ABL Spout Quick Connect

Plastic tubing to connect valving to spout.

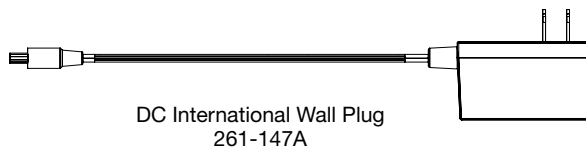
Optional Equipment

Grab Bar

For added safety and support for users.

DC International Wall Plug

Low-voltage UL/CSA listed 120V/12VDC wall plug-in adapter required with TouchTime pushbutton and TouchTime piezo switch.



DC International Wall Plug
261-147A



Required Selections

Mounting Type (select one):

- | | |
|------------|--|
| RRM | Rear Mount (Chase Available) (Default) |
| FRT | Front Mount (No Chase Available) |

Valve Type (select one):

- | | |
|-------------|--------------------------------------|
| AST | Air Pushbutton |
| SV | Single Compression Valve (Default) |
| TTPA | TouchTime® Pushbutton ¹ |
| TTPB | TouchTime® Piezo Switch ¹ |

Supply Stop Type (select one):

- | | |
|-------------|-----------------|
| ST | Supply Stops |
| NONE | No Supply Stops |

Spout Type (select one):

- | | |
|---------------|---|
| PSG05 | Ablution Spout Satin Finish (Flow Rate=0.5 gpm/1.9 Lpm) |
| PSG10 | Ablution Spout Satin Finish (Flow Rate=1.0 gpm/3.8 Lpm) |
| HPSG05 | Ablution Spout High Polish Finish (Flow Rate=0.5 gpm/1.9 Lpm) |
| HPSG10 | Ablution Spout High Polish Finish (Flow Rate=1.0 gpm/3.8 Lpm) |
| SXABL | Ablution Severe Service Spout (Flow Rate=1.5 gpm/5.68 Lpm) |

Mounting Bracket Type (select one): ²

- | | |
|----------------|--|
| CBABL-1 | Rear Accessible Mounting Bracket
(Use with PSG05, PSG10, HPSG05 & HSPG10) |
| CBABL-2 | Rear Accessible Mounting Bracket (Use with SXABL Spout) |
| NONE | No Mounting Bracket |

Quick Connect Kit (select one):

- | | |
|--------------|-----------------------------|
| ABLQC | ABL Spout Quick Connect Kit |
|--------------|-----------------------------|

Grab Bar Type (select one):

- | | |
|---------------|-----------------------|
| G18ABL | 18" Security Grab Bar |
| G24ABL | 24" Security Grab Bar |
| NONE | No Grab Bar |

Wall Plug Type (select one):

- | | |
|-------------|---|
| DCP | DC International Wall Plug ¹ |
| NONE | No Wall Plug |

¹ TTPA and TTPB valves require a low-voltage UL/CSA listed 120VAC/12VDC plug-in adapter.

² Only available with RRM mounting type.

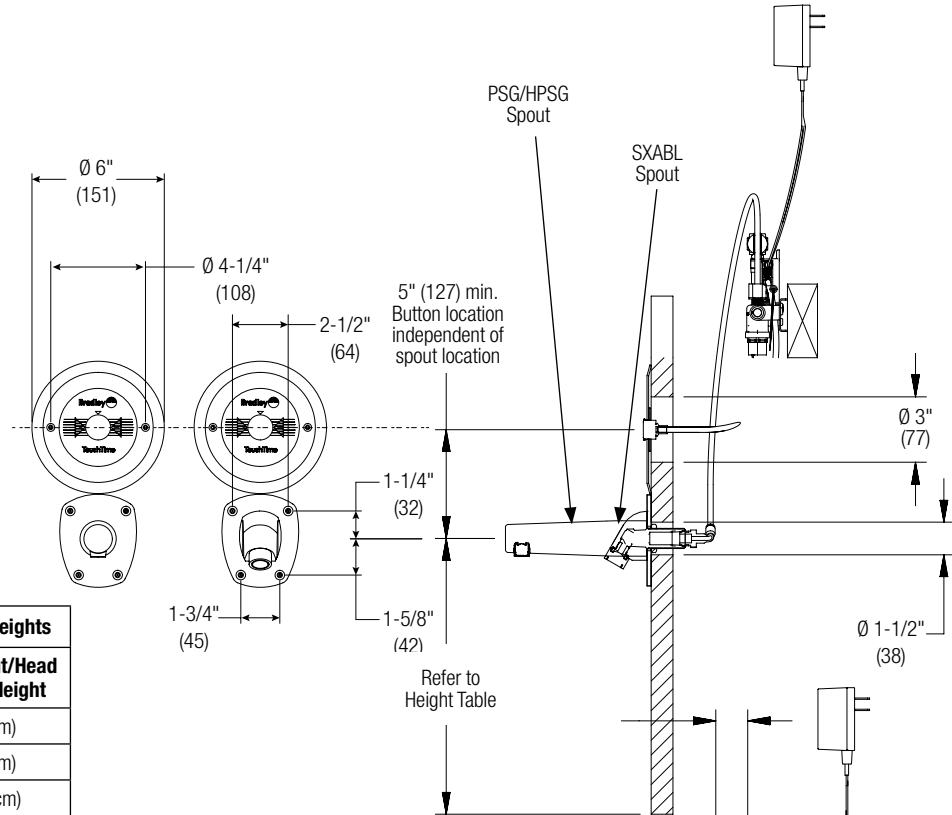


A WATTS Brand

ABP-1C Built-in Hand/Foot Washing System

Front Mount System

(mm)



Recommended Ablution System Heights	
Ablution Types	Floor to Spout/Head Centerline Height
Ablution w/ seat *	29" (74cm)
Ablution w/ lavatory *	37" (94cm)
Ablution no seat	59" (150cm)

* Bradley does not supply seat or lavatory.

Rear Mount System

